

# Blown Film Surface Treater

## Easy-to-Use Cast & Blown Film Extrusion System

Pillar's Blown Film Surface Treater is an economical, easy-to-use cast and blown film extrusion system designed with the operator in mind. It's easy to install and quick to start up, with an easy-thread, "drop through" split box design so operators can thread the web through the station in seconds. The Blown Film Station is durable, versatile, easy and safe to use - making it an industry workhorse.

Designed with this in mind, the Blown Film Station features include:

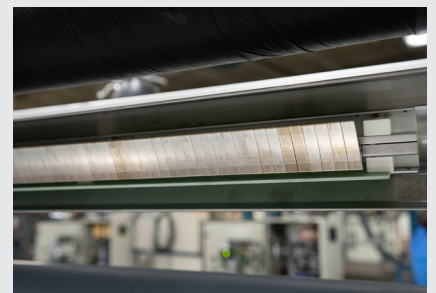
- **Quick Start-Up:** one of the biggest benefits of the unique drop-through design is that threading the web through the station is extremely easy and can be done in seconds - allowing operators to quickly and easily switch products without slowing down or burdening production
- **Durable:** electrodes are made of stainless steel to reduce contamination and make it easy to clean; sturdy electrode supports enhance rigidity and eliminate sagging; roll bearings are enclosed and kept outside of the ozone environment to prolong their life span; and a zero speed switch is included to automatically shut down the power supply in the event of low line speeds
- **Safety:** includes safety interlocks which automatically prevent operation if access covers are removed or if the station is in the thread-up position; the electrode area is completely covered by lightweight, aluminum panels; the built-in exhaust flanges easily connect to ozone exhaust blowers or Ozone Destruct Systems to protect the plant from ozone emissions; carbon track resistant polyester insulators are used to isolate electrodes from the ground
- **Versatile:** the stainless steel segmented electrode design, in a removable electrode style, allows users to alter the treat width and enable lane treating so they can customize the station to their exact application requirements
- **Easy to Install:** the high voltage transformer is mounted directly to the station with all of the high voltage connections factory wired and tested, along with the standard mounting brackets and lifting eyes, making installation quick and easy



Film Extrusion

Adhesive Coatings

Laminating and Printing



# Blown Film Surface Treater

## Easy-to-Use Cast & Blown Film Extrusion System

Pillar Technologies' Blown Film Surface Treater provides versatile and powerful surface treatment solutions for cast and blown film applications across the flexible packaging industry. The Blown Film Station was specifically engineered for easy threading, monitoring, and maintenance - making it an industry-leading design. Pillar's engineers designed this Treater Station for unrelenting performance in the most demanding applications.

### Additional Features and Benefits

- Easy-view windows allow for clear, unobstructed view and monitoring of corona discharge
- Interlocked hinged access doors designed for customer safety allow quick access for adjusting electrode gap, pitch, and treat width
- Easy electrode air gap adjustment via external adjustment screws at each end of the electrode
- Easy electrode pitch adjustment at each support
- Easy ground roll removal through the top of the treater station
- Carbon ground brushes are used to provide direct electrical ground-protected bearings and ensure proper corona treatment
- Simple troubleshooting and maintenance

### Optional Features

- Available Roll Coverings: ceramic, silicone sleeve, bonded silicone, epoxy, and glass
- Proportional speed control allowing power to increase with speed
- Manual or hands-free pneumatic high voltage switching device
- Tendency drive to assist roll rotation at start of line
- Solid or finned shoe electrodes available upon request
- Flexible exhaust adapter kit for aiding in quick installation
- Dial indicators for assistance in monitoring electrode gap
- Slide gate balance dampers located at each exhaust manifold to assist in exhaust airflow management
- Easy sleeve cores available for silicone sleeve rolls
- Dead shaft idler rolls may be added to carefully guide the web into and out of the treater station
- 4 Idler design available for inside, or outside, of bubble treatment (never both)

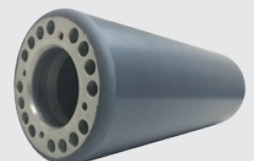
Silicone Sleeve



Epoxy



Ceramic



# Blown Film Surface Treater

## Easy-to-Use Cast & Blown Film Extrusion System



### Product Specifications

- **Treat Width Capacity:** 305mm - 3300mm webs
- **Dielectric Roll Diameters:** 100mm, 150mm, 200mm, 250mm, 300mm, 350mm
- **Electrode Styles:** 12.5mm stainless steel segmented as standard with nominal 3mm, 6mm and high efficiency fixed stainless steel
- **Web Tension:** 1.5 PLI or 263 Newton/m - higher PLI or Newton capability can be provided upon request
- **Maximum Line Speed:** standard design incorporates 200 m/min.
- **Control Voltage:** 115 VAC
- Extra-thick aluminum end plates and steel frame construction